

RoHS COMPLIANT

CUSTOMER DRAWING

REV.	ECO. NO.	DESCRIPTION
F	ES101222	
G	ES110311	
H	ES110811	
I	ES120411	
J	ES121035	CHANGE THE TRIANGLE MARK DIROTION
K	ES160712	ADD FIRST PIN MARK

Note:

Material:

Insulator: Thermoplastic, UL94V-0, White

Contact: Brass

General part number:

2011P**V*0*

1.No. of circuits(2~20P)

2.Plating

0= Tin plated 120μ" min. over 30μ" min. Nickel underplating overall

3.Coloe

0=White 1=Black 3=Red 7=Blue

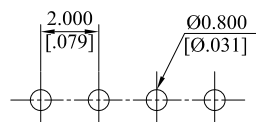
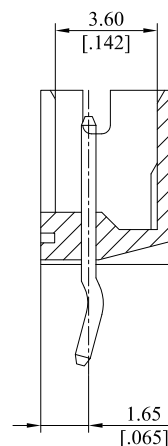
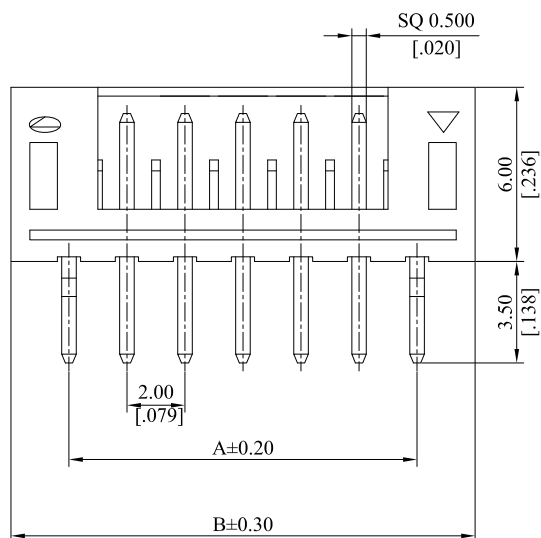
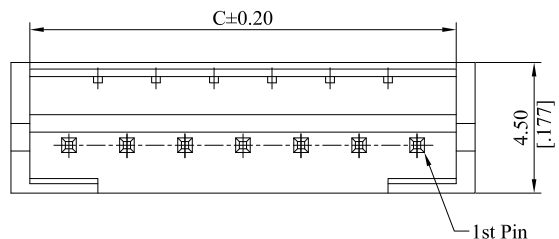
A=2.00(.078")xNo.of spcees

B=A+4.00(.157")

C=A+2.70(.106")

Circuits with The position of the kink

circuits	the position of the kink	circuits	the position of the kink
2P	1st 2nd	12P	1st 6th 12nd
3P	1st 3rd	13P	1st 7th 13rd
4P	1st 4th	14P	1st 7th 14th
5P	1st 5th	15P	1st 8th 15th
6P	1st 6th	16P	1st 9th 16th
7P	1st 4th 7th	17P	1st 9th 17th
8P	1st 4th 8th	18P	1st 9th 18th
9P	1st 5th 9th	19P	1st 10th 19th
10P	1st 5th 10th	20P	1st 10th 20th
11P	1st 6th 11st		



RECOMMENDED P.C.B LAYOUT

TOLERANCE UNLESS OTHERWISE SPECIFIED			<div>LEOCO CORPORATION</div> <div>http://www.leoco.com.tw</div>					
mm [inch]	mm	inch	APPROVED BY: Chard	DATE: 2016.07.11	TITLE: 2.00Pitch Wafer			
1 PLACE	± 0.30	± —	CHECKED BY:	DATE:				
2 PLACES	± 0.20	± .012	DRAWN BY: Angel					
3 PLACES	± 0.10	± .008	DATE: 2016.07.11					
4 PLACES	± —	± .004	PART NO.: 2011P**V*0*					
ANGULAR ±1°			SIZE: A3	SCALE: 1:1		DRAWING NO.: 201121S	REV.: K	SHEET: 1 OF 1